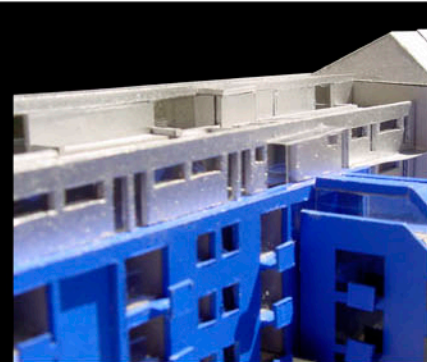
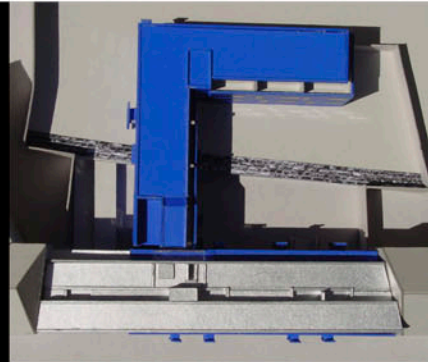
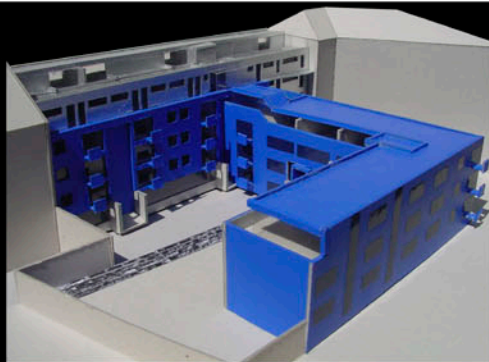
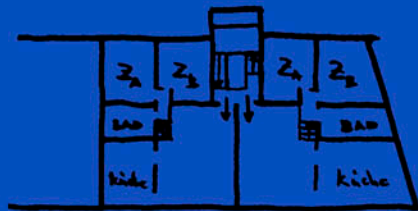


A M K A R L S G R A B E N



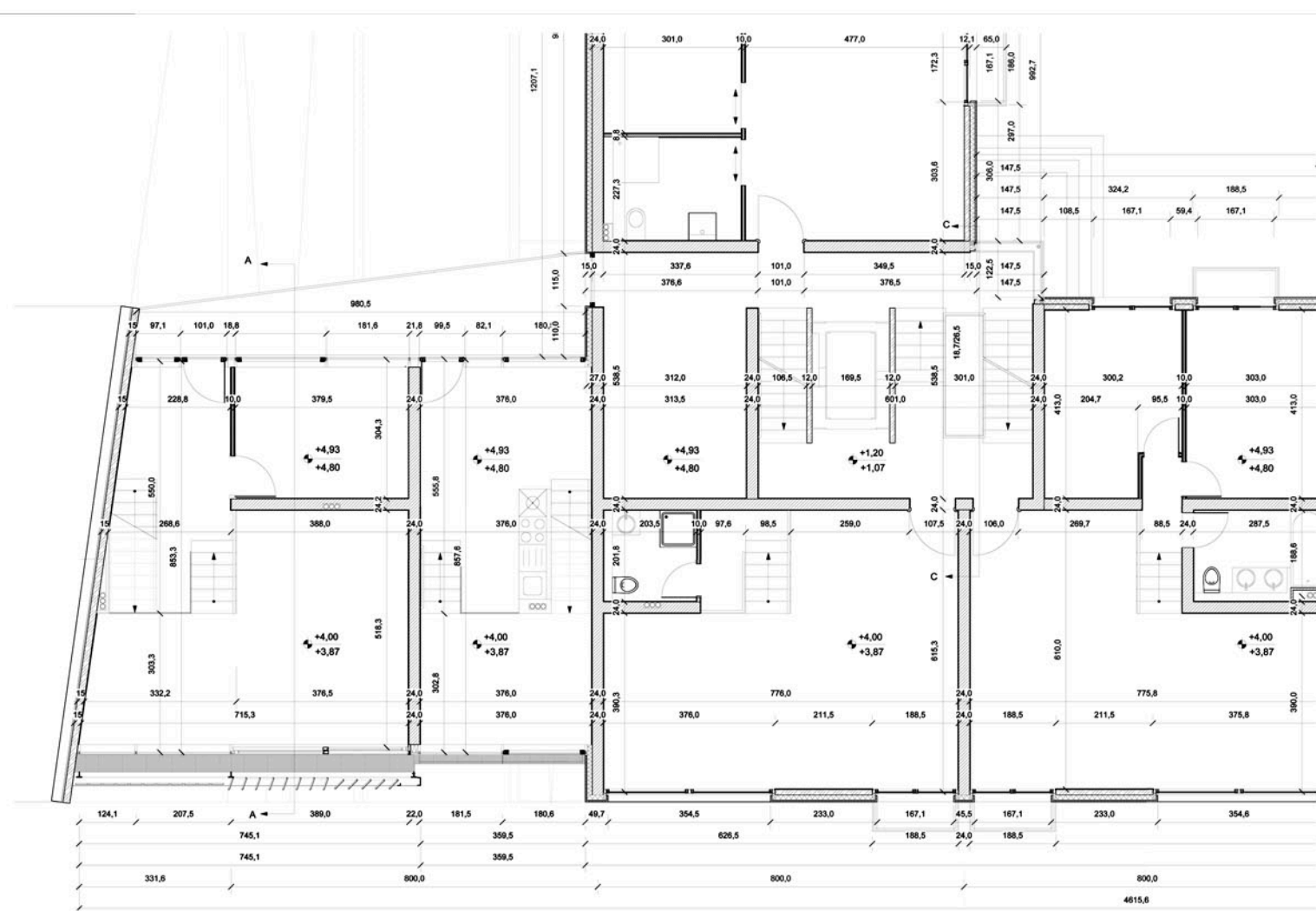
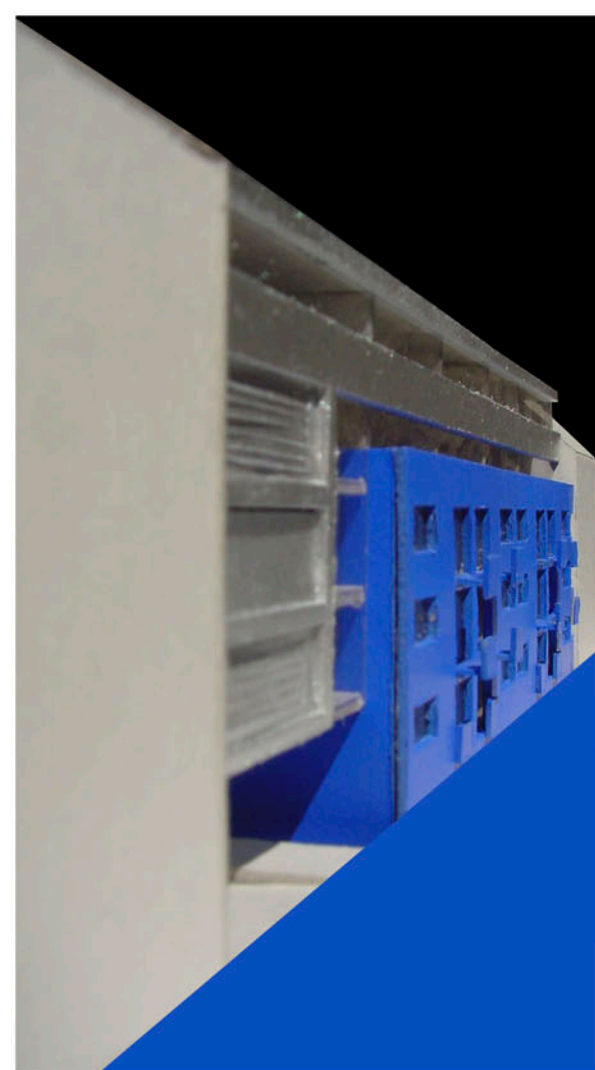
E 4 | F O U R T Y T W O

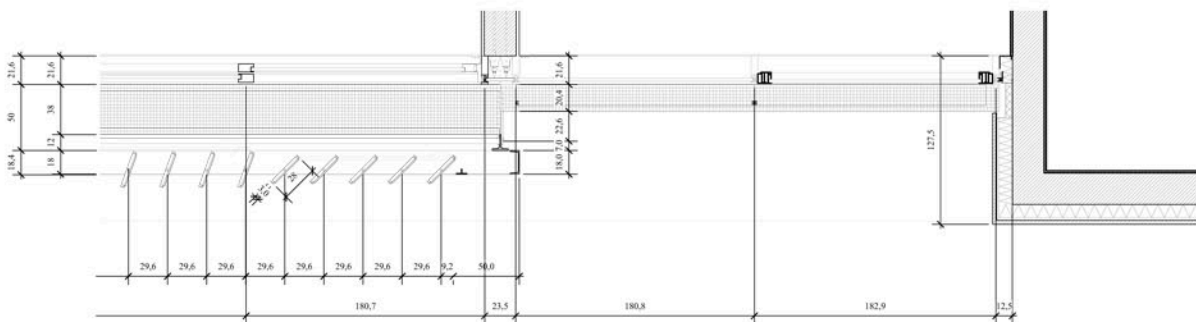
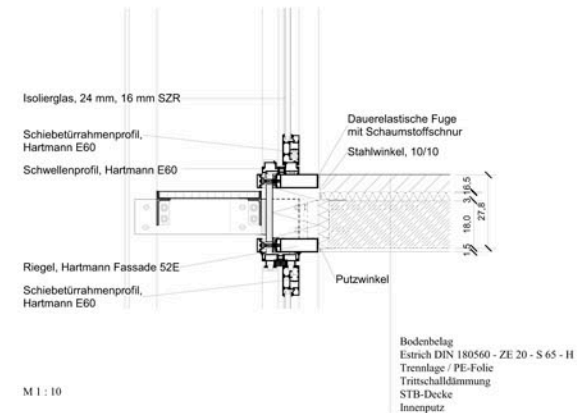
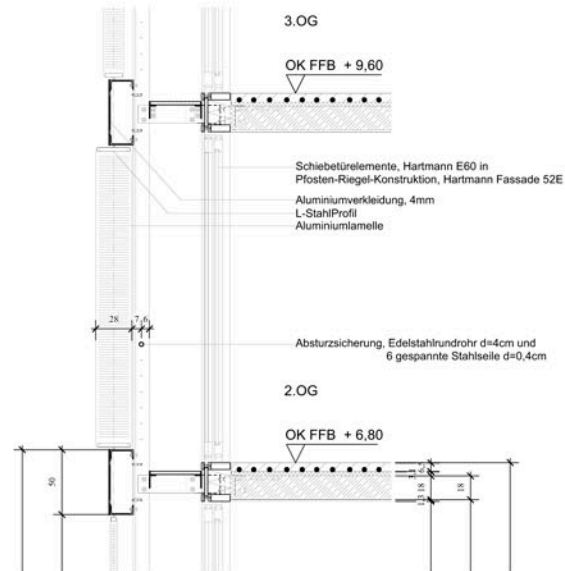
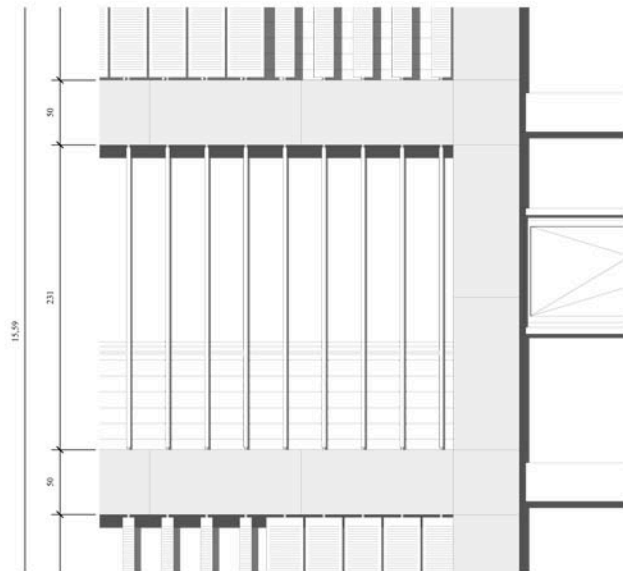


D e s i g n

„E4 - am Karlsgraben“
- housing unit

FH Aachen | 2001





Baukonstruktion 4 ... Detail Planning of the E4 housing unit | at the University of applied science (FH) Aachen an emphasis in education is placed upon construction aspects and detailing, in particular on common construction methods for privat houses and housing units. I attended courses on basic construction details, building services, physics and structural analyses, leading to more complex projects on structural engineering.

In this context I worked out a nearly complete detail planning of this housing unit I designed during my third year, in scales 1/50 - 1/2. It deals with two different shapes, an U-shape with a bar upon it, and by consequence with two different façades. One with a dark stone cladding, the other cladded with aluminium panels, featuring rotatable sunshade-elements.

D e t a i l i n g
 ‚E4 > B4‘
 - Construction planning
 FH Aachen | 2002