

RICHTUNGEN  
LEBENDIGKEIT  
LICHTBRECHUNG

### BAY

#### ZIELE DER KONZEPTION ZUR NEUGEST.

DURCHGANGIGE GESTALTUNG OHNE WANDFORME  
KONTRASTREICHES ANERKENNUNGSFÄHIGES ABSTRAKTES KLARER  
VERBUNDENHEIT UND BELEBUNG DER RAUMSICHT UND GEBIETEN  
VERSTÄRKUNG DER HORIZONTALITÄT BEI ABWENIGEN ANSCHLÜSSEN  
STRUKTURELLE QUERSCHNITT GRÖßER, IN SAMENHÄNGENDE  
ES HEISSEN 3 WANDERLICHEN MIT UNTERSCHIEDLICHEN DÄRMEN, DIE  
VORSCHEITEN MIT LEICHTEM METALLISCHEN GLANZ, HELL UND  
STERNIG - ABSTRAKT, DUNKEL UND MOCHSCHON - DEN KONTRAST  
BEI 4 SCHNITTEN DURCH DIE RAUMWEITEN UND DIE VER-  
BUNDENHEIT UND FUGENANBAUUNG DER HORIZONTALITÄT MITZENT  
DAS PRINZIP DER FINESSEN FASSUNG IST DIE HORIZONTALITÄT WIE  
EBENEN QUERSCHNITT - IN UNTERSCHIEDLICHEN RHYTHMEN UND  
BESTANDTEILEN DES HOCHHAUSES SIND DIE METALLWEITEN IN IT



FELIX SCHRÖDER FELIX SCHRÖDER FELIX SCHRÖDER FELIX SCHRÖDER FELIX SCHRÖDER  
PORTFOLIO PORTFOLIO PORTFOLIO PORTFOLIO PORTFOLIO

## DI (fh) Felix Udo Schröder

Born January 11th 1977  
In Cologne, Germany  
Nationality German

Contact Mejsevænget 4, 2tv  
2400 København NV  
Danmark

Mobil +45 26650850

felix.schroeder@kraftpixel.de  
www.kraftpixel.de/felix

## EMPLOYMENT

10/ 2006 **SITE AS** | Architects in Copenhagen (DK)  
08/2005 - 02/ 2006 **Silberpfeil-Architekten** | Architects in Vienna (Austria)

## WORK EXPERIENCE

10/2003 - 07/ 2004 **Silberpfeil-Architekten** | Architects in Vienna (Austria)  
05/2002 + 11/ 2002 **FSW Düsseldorf** | Competition management in Düsseldorf  
08/1999 - 10/ 1999 **Architekten Scharf + Kirsten** | Architects in Cologne  
09/1998 - 10/ 1998 **Gennen&Nerger** | Building Contractor in Würselen  
03/ 1998 **Sarl Thetiot** | Carpenter in La-Chapelle-Caro (France)

## STUDIES

06/ 2005 **Diploma** | FH Aachen  
„nominated for the Euregional Architecture Prize 2005 (EAP)“  
03/2004 - 10/ 2004 **Architecture** | TU Wien in Vienna (Austria)  
10/1998 - 06/ 2005 **Architecture** | FH Aachen  
10/1997 - 09/ 1998 **Civic engineering** | RWTH Aachen

## CIVILLIAN SERVICE

08/1996 - 09/ 1997 **Care for handicapped person** | Johanniter Unfallhilfe Neuenrade

## SCHOOL

06/ 1996 **A-Levels** | ASG Plettenberg  
09/1993 - 12/ 1993 **Secondary school** | „Lycee maurice genevoix“ Ingre (France)  
08/1987 - 06/ 1996 **Secondary school** | „Albert-Schweitzer-Gymnasium“ Plettenberg  
08/1983 - 07/ 1987 **Primary school** | „Grundschule Ohle“ Plettenberg

## LANGUAGES

**German**  
**English**  
**French**  
**Danish** | 3 weeks course at KISS

## COMPUTERSKILLS

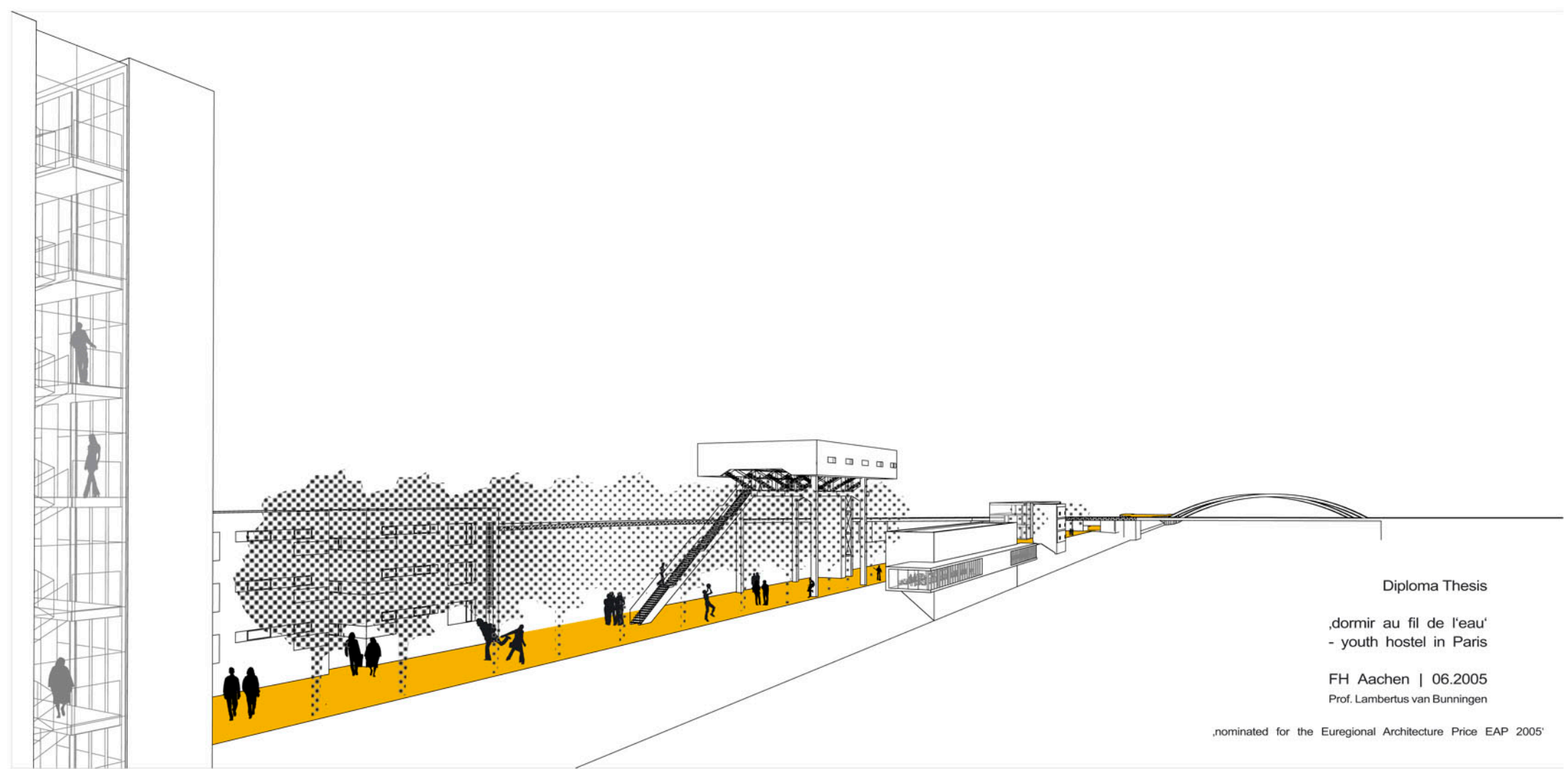
**Autocad** | 2D/3D - ADT  
**Microstation** | 2D/3D  
**Vectorworks** | 2D/3D  
**Cinema4D** | Rendering  
**Adobe Creative Suite**  
**Photoshop**  
**Illustrator**  
**InDesign**  
**Acrobat**  
**Dreamweaver**  
**MS-office**

## HOBBIES

**Travel**  
**Learn languages**  
**Play the Saxophon**  
**Rafting**

## PROECTS

**IDC**  
Youth hostel Paris, F  
**BLOCKBUSTER**  
Urban Design, D  
**EN 490**  
Sleeping Car for öBB, A  
**HAK**  
School in Feldkirch, A  
**A Tent for Planes**  
Hangar for jetplanes  
**E7**  
Hotel in Aachen, D  
**E4**  
Housing Unit in Aachen, D  
**B4**  
Detailing Project  
**E3**  
Flexible Living  
**E1-E2**  
Design Projects  
**Silberpfeil-Architekten**  
Internship Vienna, A

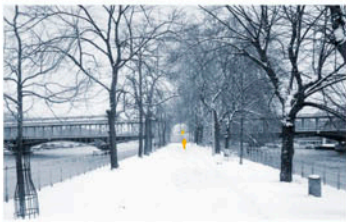
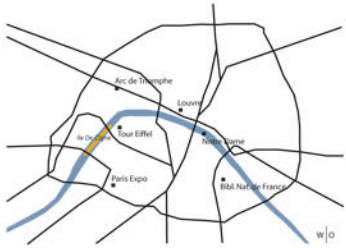


Diploma Thesis

„dormir au fil de l'eau“  
- youth hostel in Paris

FH Aachen | 06.2005  
Prof. Lambertus van Bunningen

„nominated for the Euregional Architecture Price EAP 2005“



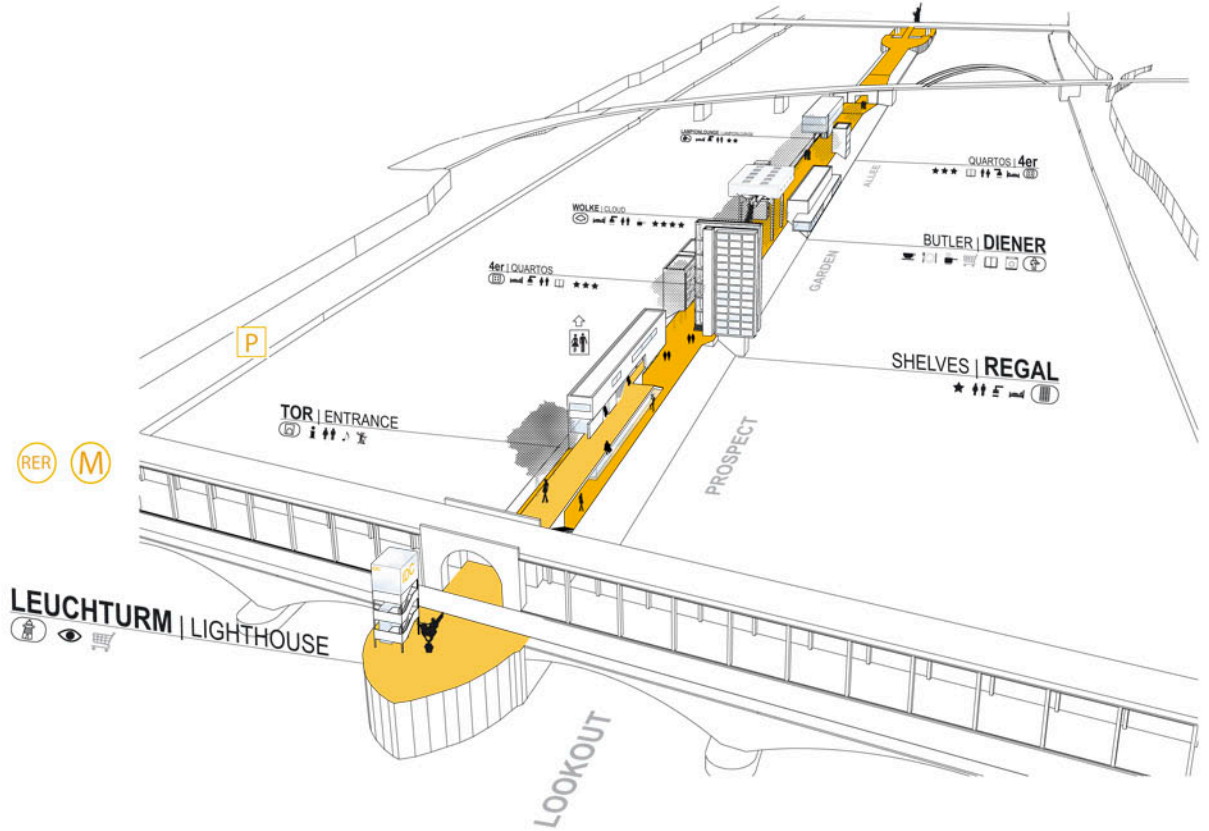
## „REJUVENATING TO THE SOUND OF FLOWING WATER“

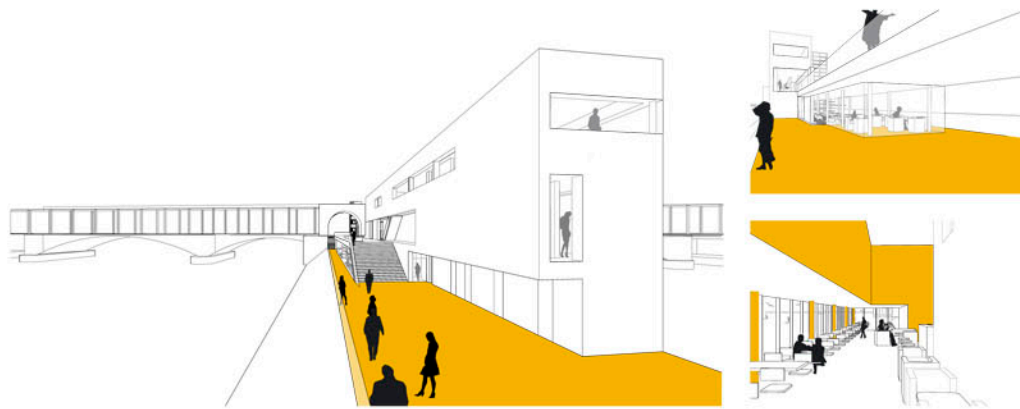
The „Ile des Cygnes“ is a long and narrow man-made island in the Seine river in Paris. Dense trees line the avenue that runs along its center line. Three bridges connect the island to the city of Paris.

A concept design was sought for a hostel for young travellers to be built on the island. The design should reflect, in its spaces and its atmosphere, the attitude and life style of its adolescent guests. It should also respect the character of the island as an established local recreational area.

My design, an ensemble of individual dwellings placed along the avenue like pearls on a string, embraces both of these characteristics: like a village, the hotel gently integrates itself into the island, adding new spaces and reshaping existing ones, yet maintaining the structural unity of the island. On the other hand, the subdivision into small units conveniently accommodates for the broad spectrum of needs of the young traveller: large, comfortable and functional social rooms and facilities common to all guests are complemented by a variety of different bedrooms. The overnight rate would be determined by the degree of privacy the room offers more than by its size or level of comfort.

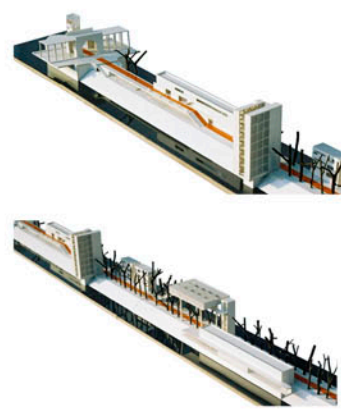
In this spirit, the accommodation options include the „Shelves“ that offer cheap beds in multi-layered bunk beds. Three smaller „Quartos“ units offer the privacy of small four-bed apartments, in high demand for young families or mini-groups. The „Cloud“, beyond the tree tops, features exclusive sky and city vistas in romantic double rooms. Finally, the „Lampion or lantern lounge“ is a large room with single beds each of which offers some privacy through a surrounding membrane-like curtain that can be lowered from the ceiling - gently illuminated reminiscent of a lantern.





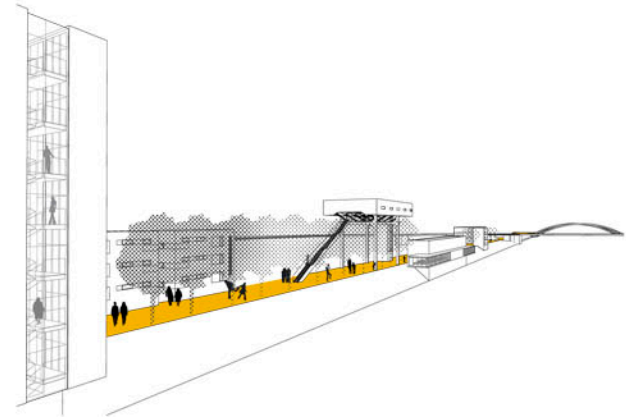
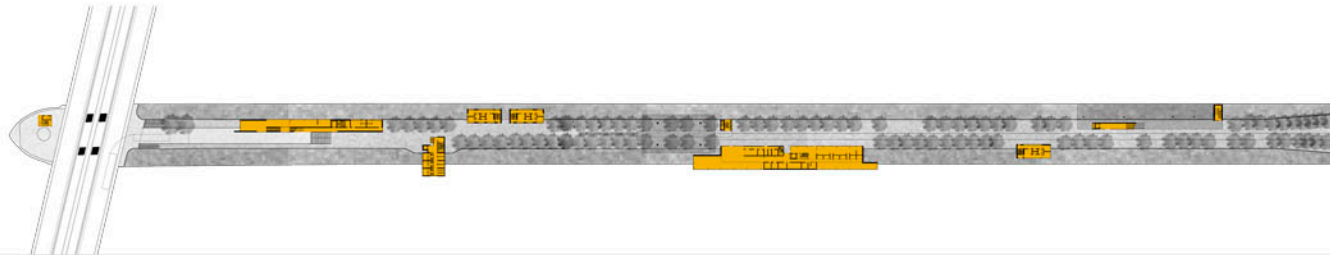
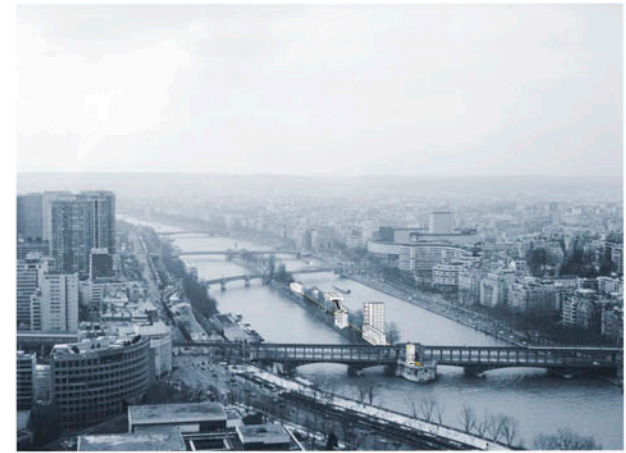
THE GATE

forms the entrance to the Ile des Cygnes. Here one finds the reception, backoffice, storage and staff rooms along with a conference area with two conference or meeting rooms, and a dance and chill-out place called the „liquid room“. The „liquid room“ is situated in the basement, on island level, and features a lounge area, a bar and a small stage. The gate consists of a cubic building and a stretched strip running along, that connects the island to the level of the „pont bir hakeim“, offering a superb view on the stately residential houses of the 16e arrondissement on „rive droite“ and a glimpse along the isle’s main axis of the whole hotel site, up to „Pont de Passy“ and the small statue of liberty at the far end.



THE BUTLER

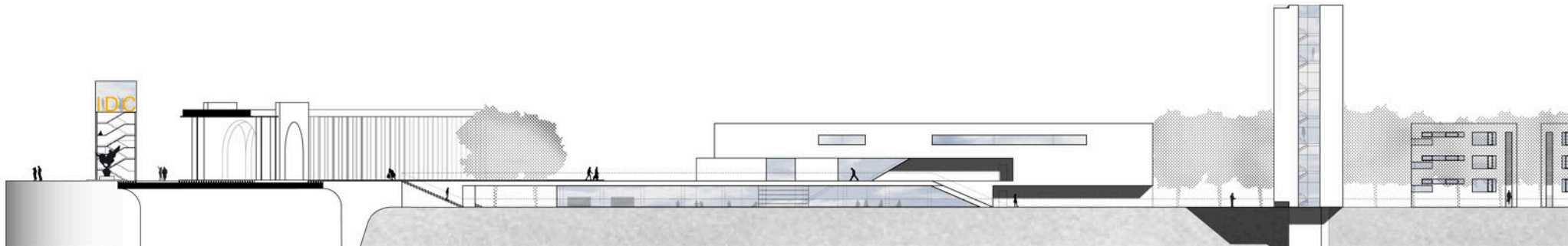
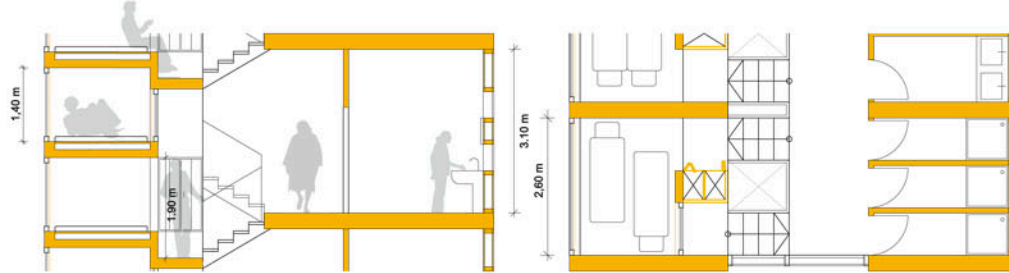
contains the hotel’s essential service facilities including a restaurant, a breakfast room, cooking facilities for self-catering and a „supermarket-machine“. Floating over the River Seine, the lower dining area appears as a framed panorama of the opposite riverside when entering the two storey room of the restaurant. A monolithic service cube divides the restaurant from the self-catering zone. A living-room with library and internet access is located on the first floor, looking into the tree tops on the isle itself.

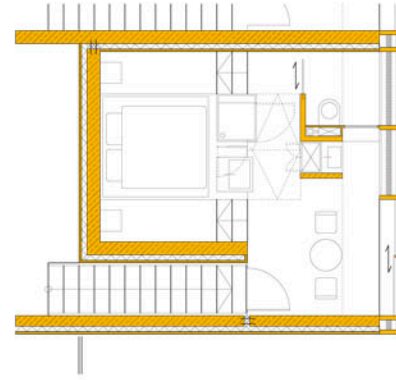
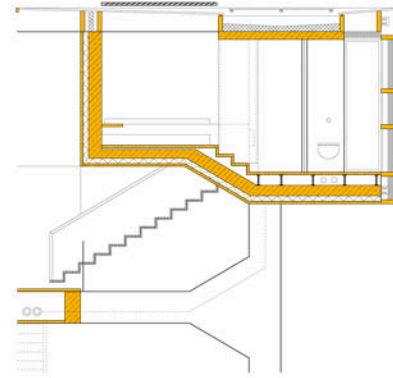
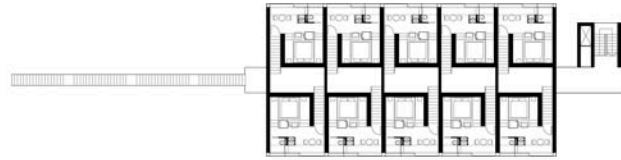
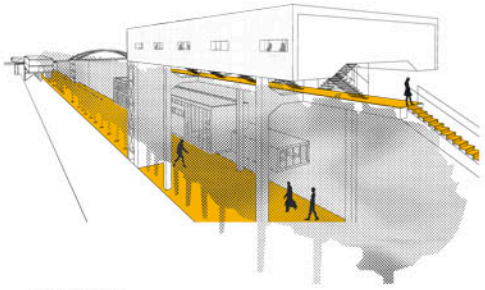




## THE SHELVES

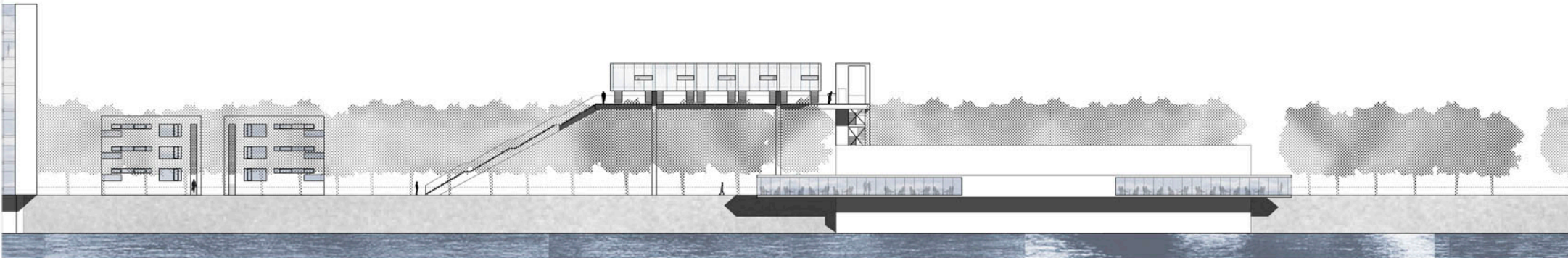
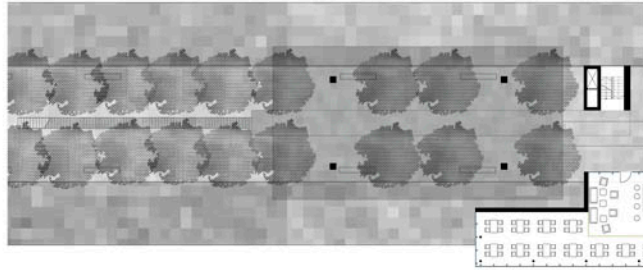
are two concrete shelves separated by the main hallway, one side made up of bunk beds, the other of bathrooms. The bunk beds are closely/densely packed in a multi-layered vertical and horizontal array. Nevertheless each visitor still has access to his own bed through a private corridor, high enough to stand up and with a locker for personal belongings. This is achieved by a short staircase which leads up to each bunk, so that the sleeping shelves are actually separated from the sanitary shelves by the staircase and in this way perceivable along its entire height. While being the least expensive form of accommodation offered by the „Ile des cygnes“, it still features beautiful views over the Seine and downtown Paris with the Eiffel tower.

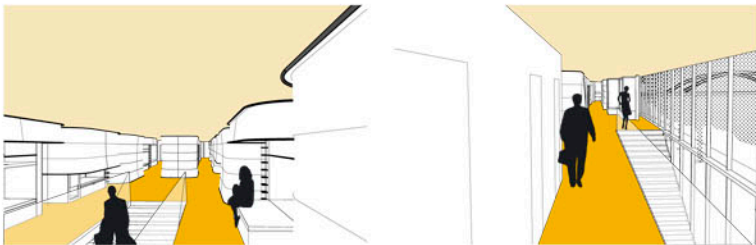




## THE CLOUD

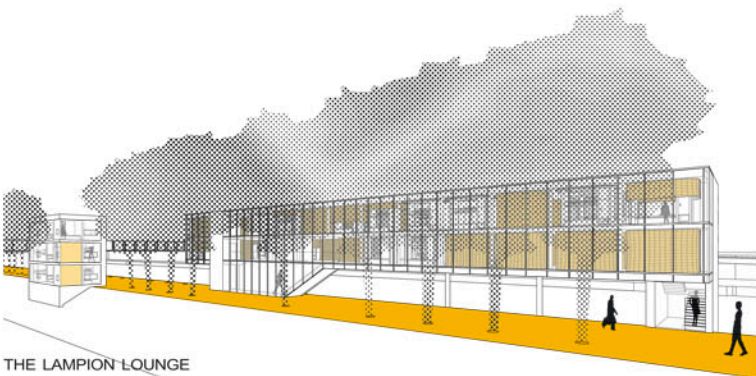
provides an exclusive get-away for the romantic weekend for couples in Paris. At the end of the long staircase, the cloud appears just above the treetops. From the main hallway you reach each cloud apartment by a steel-staircase. The cloud consists of a concrete structure which is covered by a partly transparent, partly translucent shell. From the staircase you reach a bright room which allows just a few select views. The room provides a breakfast space including a small kitchen, a bath tub and a french bed. Lying in bed you can see the stars through the glass ceiling while having a perfect nap...





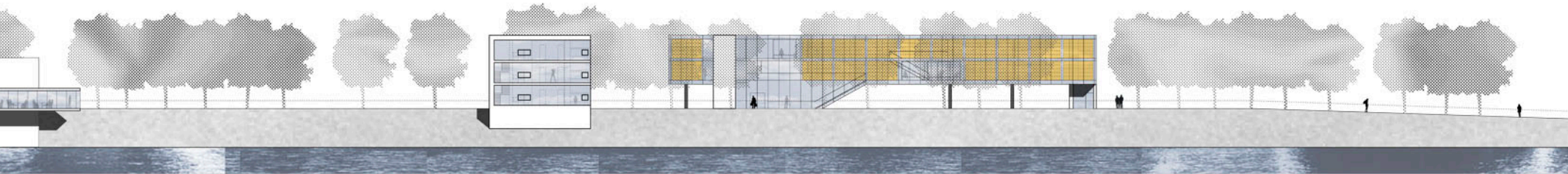
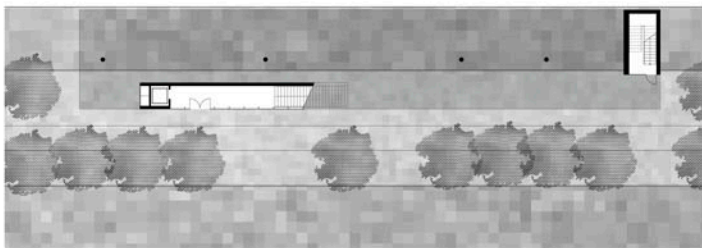
#### THE LAMPION

is part of the Lampion lounge. It consists of a bed-element for two people and an additional curtain which the user can draw to separate a more intimate area from the large open space of the rest of the Lampion lounge. Lowering the white lightly translucent membrane from the ceiling, one finds oneself within the tent-like atmosphere of the lampion. The bed element can be pulled out and therefore be used either as a single or as a double bed.



#### THE LAMPION LOUNGE

is a spacious two-level dormitory that floats between the treetops at the north-western end of this ensemble. In this vast room, the cell-like bed modules create privacy for the individual visitor. Each of these modules consists in a comfortable bed with a wooden base, and a translucent membrane that can be lowered from the ceiling to create the ambience of a tent-like capsule. The units are equipped with individual lighting and lockers, and the single beds easily unfold into double beds. Thanks to windows spanning much of its wall space, the lounge is gently embedded in its natural surrounds. While providing some privacy, the Lampion lounge offers a unique sleep-over experience.







Urban Design

'BLOCKBUSTER'  
- living in the city

FH Aachen | 09.2003  
with Björn Patzwald

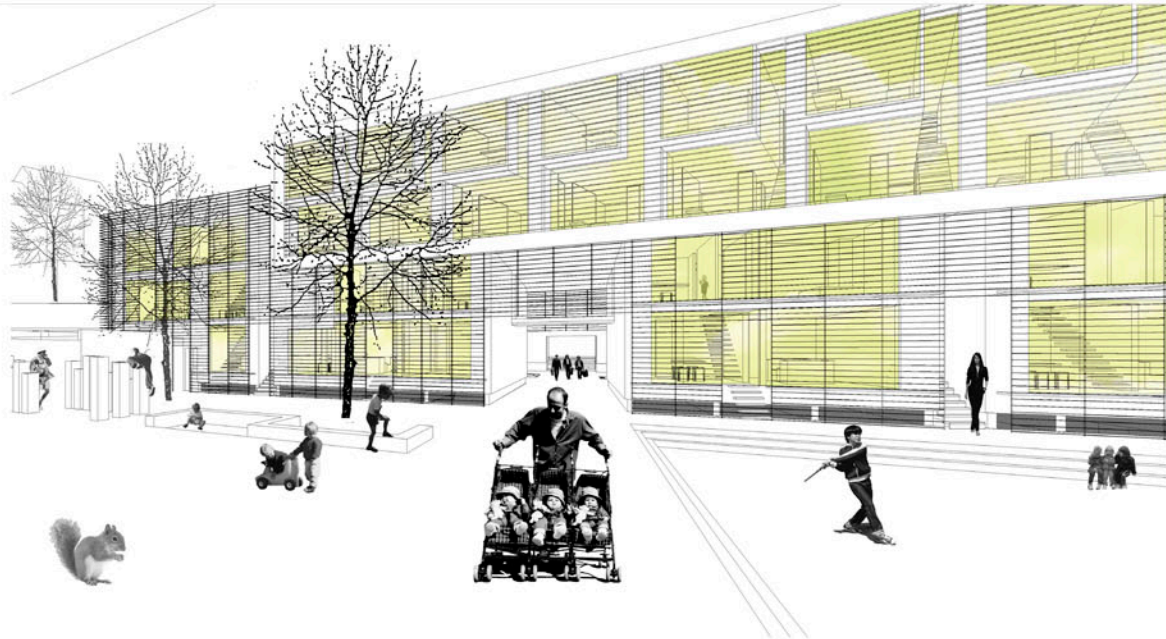
# <BLOCKBUSTER>





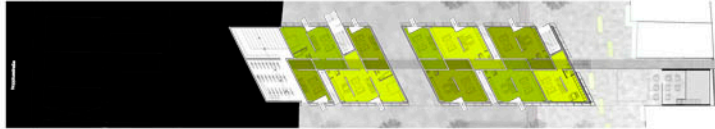
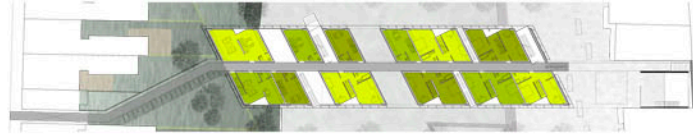
starting from four gaps in the facades of the Adalbert Street four dwelling units stretch southwards into the old block, like four fingers of a hand, slightly irregular generating funnel-shaped courtyards. Along with these buildings comes a new system of footpaths through the block, opening and connecting its inside to the surrounding streets.

the <BLOCKBUSTER> busts the block from its inside, without destroying it, but by implanting a new structure, adding a variety of different spaces and atmospheres and opening it to the city. It creates a family-friendly environment in a high density City cluster.



# <BLOCKBUSTER>



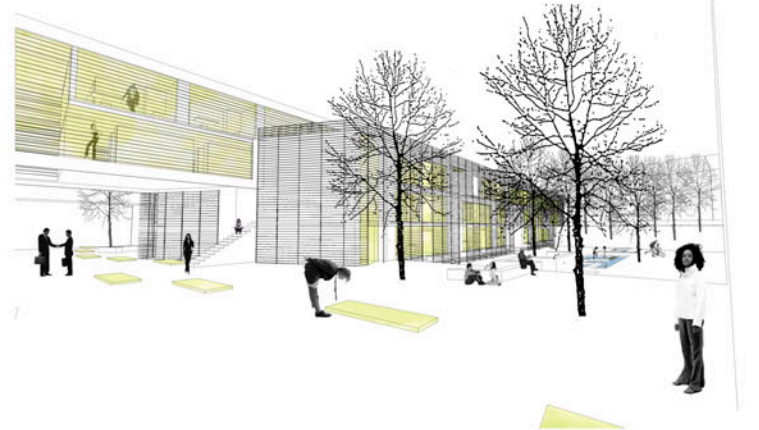


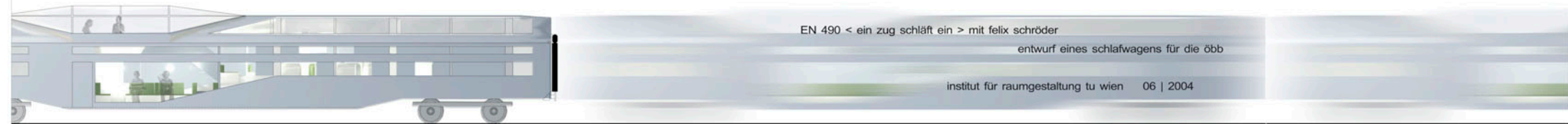
#### architecture and apartment types

the structure of a dwelling unit does not resemble a common apartment unit, but rather a very condensed row of one-family houses accessed through a central corridor on the first floor. conceived as maisonettes on two or even three levels, each one has a direct access to the courtyard, too.

a metal grid embraces the perforated compound of the dwelling unit. it acts as a sunscreen and a transition layer between outside and inside. the apartments provide up to four bedrooms in a floating space, reflecting the buildings skewed geometry in a suspenseful manner.

the upper housing-bar contains simple, small maisonettes with roof-deck for singles or couples, accessible from a corridor on second floor level.





EN 490 < ein zug schläft ein > mit felix schröder

entwurf eines schlafwagens für die öbb

institut für raumgestaltung tu wien 06 | 2004

( interior ) Design

„ein Zug schläft ein“  
- Euronight sleeping car

TU Wien | 06.2004  
with Silke Jörgenshaus



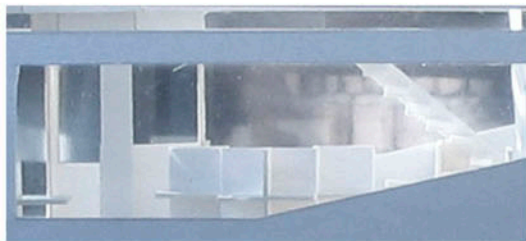
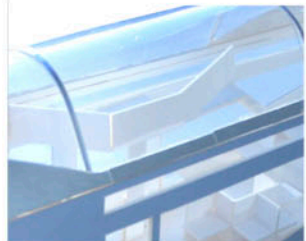
ansicht m1:100

The design concept of this sleeping car is a saloon coach, just one floating space, no compartments. All voyagers can benefit from this open space, as they can hear, feel and run through it. There are no reserved seats, just some lockers for the luggage at the entrance and the possibility to do whatever you like at any moment of your journey.

EN 490 < ein zug schläft ein > mit felix schröder  
entwurf eines schlafwagens für die öbb  
institut für raumgestaltung tu wien 06 | 2004



schnitt m1:100

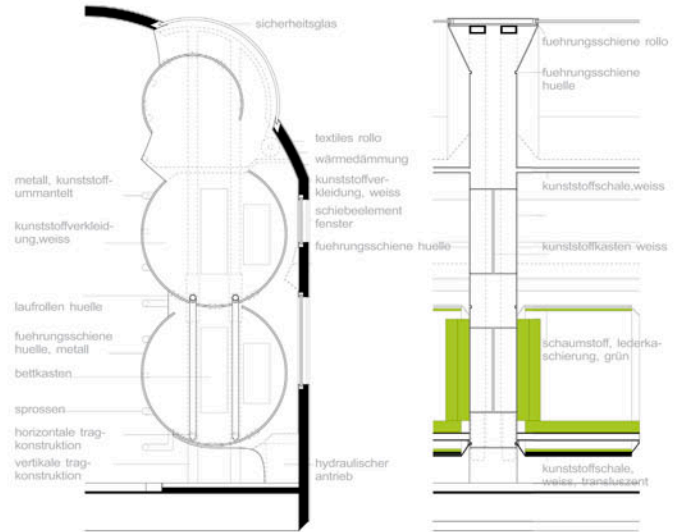


grundriss m1:100

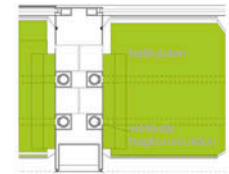
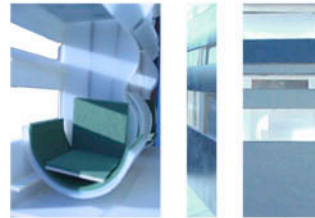
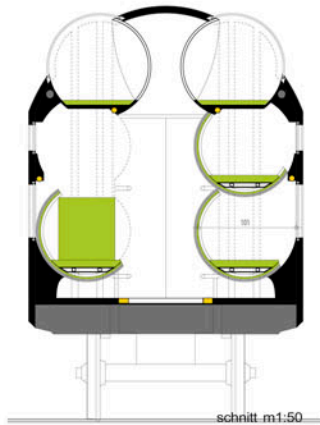
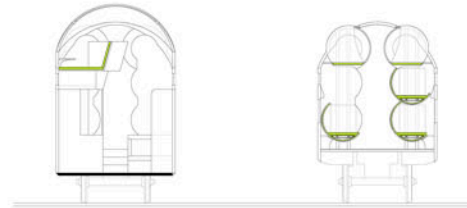
The sleeping-area consists of changeable bucket seats, that become intimate bunkbeds at night. They enable each passenger to regulate his relation to the others in various ways, from communicative to isolated, with an immediate impact on the atmosphere of the whole coach. At sleeptime the seats change to bed one by one and the car falls slowly asleep...



grundriss m1:100



By rotating the seat-shells in its bed or seat position you can open or close your cabin in order to get more or less privacy. Need a place to sleep? -push your seat up and tear! You'll find a blanket and a pillow behind the door at the front end. Here you can also store your valuables at night.





**felix schröder | praxissemester 2003/04 | wien**

 *silberpfeil-architekten*

Felix Schröder | praxissemester 2002/04 | wien  
www.felixschroeder.com

Felix Schröder | Silberpfl Architekten | Wien 2004  
Im Rahmen meines Praxissemesters an der FH Aachen habe ich von Oktober 2003 bis Juli 2004 an dem Wiener Architekturstudio Silberpfl Architekten, Grabenstrasse 71 2. & 3. 1020 Wien, Österreich, gearbeitet. Von März bis Juli hat begleitend Studium an der TU Wien.  
**Silberpfl Architekten**  
Wird im Umland, idyllischeres Wohnklima mit Sitz in einer ehemaligen Teilfläche in 12. Bezirk Wiens. Seit 2001 arbeiten unter diesem Namen die beiden Architekten Dr. Peter Rogg und Dr. Christian Köhler, verbunden mit Dr. Rita Penzger und verschiedenen Mitarbeitern an diversen Projekten im Bereich von Architekturbüro, Planung und Kultur. Aktuell realisieren die TU Wien, mit Ausdehnung und Umbau in mehrere räumlichen Ebenen von Design, Natur und BSC.  
Designen wird das Büro in enger Linie vom preisgekrönten Auftrag eines Dachbaus in der Gartengasse im 8. Bezirk, in Frage eines gewissen ausweisen, offenen Wohnwerks von 2007 dessen Fertigstellung Ende 2008 bevorsteht, und weiterer kleinerer Projekte.  
Während meiner Zeit bei Silberpfl Architekten habe ich meine Fertigkeiten im Bereich der Projektarbeit, einer Zusammenarbeit als Projektmanager, im Bereich der Kommunikation, im Bereich der Präsentation, im Bereich der Darstellung, im Bereich der Modellierung, im Bereich der Ausarbeitung einer Präsentation sowie der Projektarbeit im Bereich der



PETER ROGG



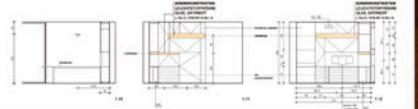
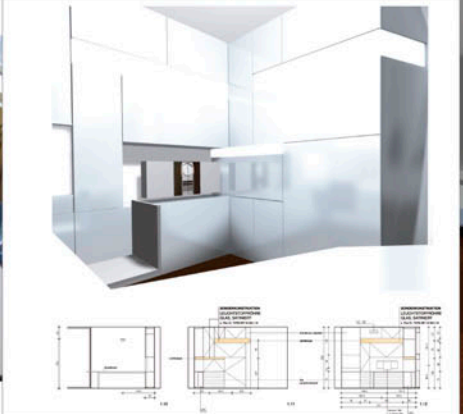
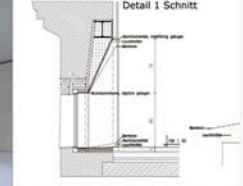
CHRISTIAN KÖHLER



RITA PENZGER



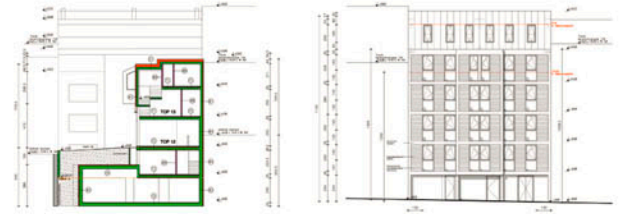
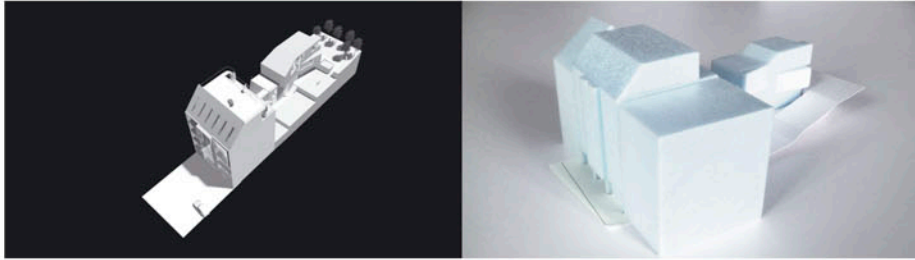
**TOPF**  
TOPF, Gattlingstrasse 1, 1010 Wien  
Einfamilienhaus nach Wettbewerbgeheimnis bei Auszubildenden  
Fertigstellung Ende 2004  
**TOPF ist Wohnung Nummer 8 des WZVO-Projekts. Der neue Eigentümer von TOPF erwirbt nach dem Erwerb der Wohnung einen kleinen privaten Wohnbereich zum Terrassenbereich und zur Errichtung der Wohnung, aus dem das Konzept der überdachten Terrasse unter dem Namen 'Atrium' herausgearbeitet ist. Als Folge der Errichtung der Wohnung ist die größte des gesamten Dachbereichs auch bereits über dem Erdgeschoss auf etwa 430m². Durch den Raum auszubildenden für die Errichtung der Wohnung die 'Welle' die 3. Ebene im Turm mit überdimensionalem Blick auf den Berggarten und über die Stadt Wien. Die Errichtung besteht aus einer Vielzahl von Einbaumöbeln, sowie schwebende Einrichtungsgegenstände. Benutzbereich ist sowohl der inneren Aufwand für Haustechnik, als auch für Entwerfen und Malerarbeiten, sowie das Anlegen an sich.**





**BAY**  
 Neubau eines Wohnhauses, Gersthofstrasse, Wien  
 Entwurf

Das Wohnhaus besteht aus einem Rahmenbauwerk an der Gersthofstrasse sowie einem Gersthofhof, der auf der südlichen Seite der Fassade des Quadrats angelegt wurde. Beide werden über eine gemeinsame Stiegenhaus erschlossen. Insgesamt entstehen 13 neue Wohnungen unterschiedlicher Größe.



SCHNITT E-E

ANSICHT GERSTHOFSTRASSE



GARTENANSICHT SCHNITT D-D



ANSICHT



SCHNITT BB



SCHNITT AA



1. OG



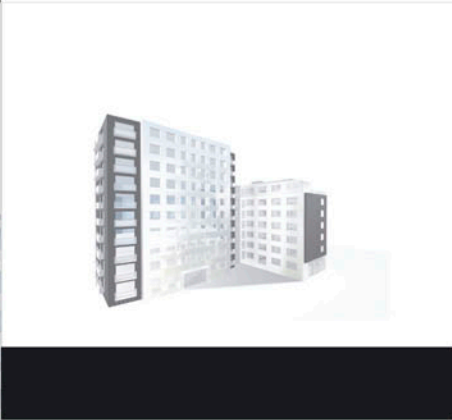
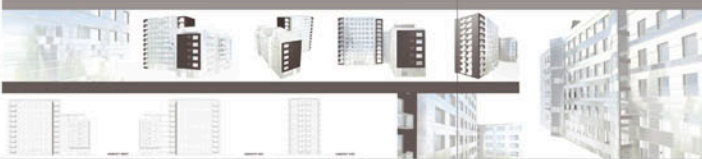
SCHICHTUNGEN  
 LEBENDIGKEIT  
 LICHTBRECHUNG



**BAY**

ALLE DIESE KONZEPTION ZUR WEISESTELLUNG DER PASSAGE SPANNEN SICH ÜBER DIESE WEISE...

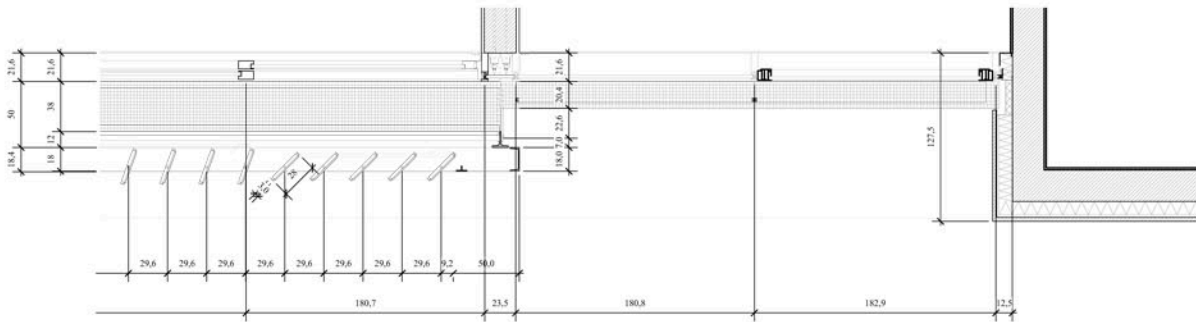
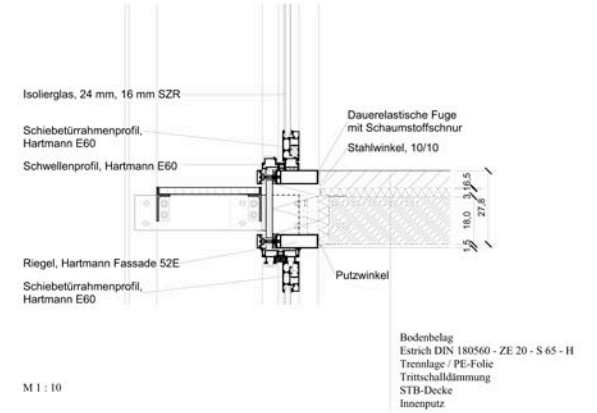
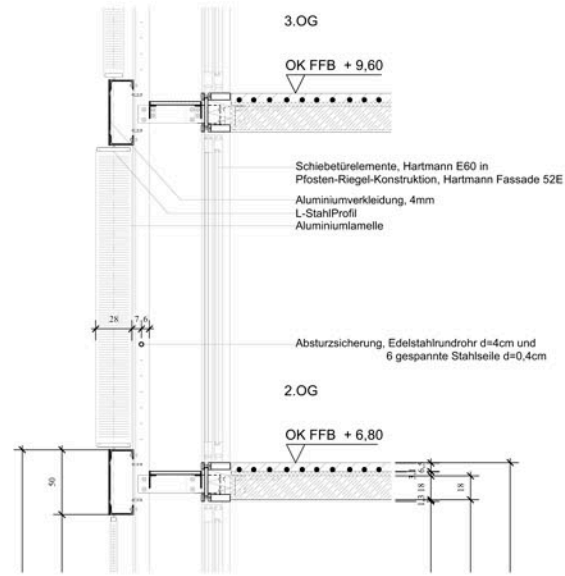
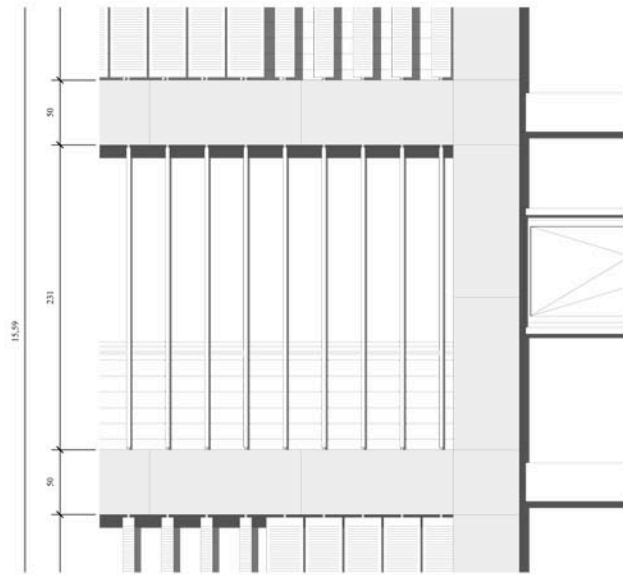
**SILBERPFEL-architekten**



**BAY**  
 Studie zur Sanierung und thermischen Verbesserung  
 Baurechtsplan 1030 Wien  
 Wettbewerb, 1. Platz

Das Ziel war ein den 1930er Jahren mit Holzwerk und Beton, mit  
 Scharn- und einer Fassade thermisch verbessert werden. Der Entwurf  
 war eine sorgfältige Herangehensweise, die Fassaden als Material  
 Zuehler, in horizontaler Abformung, und Elementen vor. Dieses  
 Konzept ging aus dem Konzept, globaler Wettbewerb als Sieger  
 hervor. Dabei werden Förderungsmaßnahmen geprüft.

**INTERNSHIP**  
**SILBERPFEL-architekten**  
 Wien | 2003/04



**Baukonstruktion 4 ... Detail Planning of the E4 housing unit** | at the University of applied science (FH) Aachen an emphasis in education is placed upon construction aspects and detailing, in particular on common construction methods for privat houses and housing units. I attended courses on basic construction details, building services, physics and structural analyses, leading to more complex projects on structural engineering.

In this context I worked out a nearly complete detail planning of this housing unit I designed during my third year, in scales 1/50 - 1/2. It deals with two different shapes, an U-shape with a bar upon it, and by consequence with two different façades. One with a dark stone cladding, the other clad with aluminium panels, featuring rotatable sunscreen-elements.

D e t a i l i n g  
 ,E4 > B4'  
 - Construction planning  
 FH Aachen | 2002